

Morell River Management Cooperative **Annual General Meeting**



April 20th, 2023

Table of Contents

Agenda	3
Minutes - MRMC Annual General Meeting 2022.....	4
President’s Report	5
Treasurer’s Report	6
Watershed Coordinator’s Annual Report	8
2022 Board of Directors	10
2022 MRMC Crew	12
Watershed Management.....	13
2022 Field Season Projects.....	14
Morell River Deflector Structures	14
Morell River Brush Mats.....	15
Bristol Creek Atlantic Salmon Habitat Enhancement	16
Riparian Zone Restoration	17
Barrier Management.....	18
Beaver Management.....	19
Access Trails	20
Shoreline Cleanup.....	21
North American Bat Monitoring Program	22
Invasive Species Management.....	22
Canada Goose Banding.....	22
Wood Duck Boxes.....	23
Mooney’s Pond Pollinator Garden	23
Fish Stocking.....	23

Surveys & Monitoring	24
Temperature Monitoring	24
Pit Tagging & Antenna Stations.....	25
Smolt Tagging.....	25
Redd Surveys	26
Fish Trap & Broodstock Collection.....	27
Community Connection.....	28
Go!East Events	28
Plamu’k na Kitapina’q - Salmon Are Our Friends Program.....	28
Outreach	29
Communications	29
Mooney’s Pond Interpretive Centre & Trail	30
Partners	31
2023 Work Plan	32
Contact Information.....	33

Agenda

MRMC Annual General Meeting 2023

Call to order – Welcome, introductions & land acknowledgment

Approval of agenda

Review and approval of 2022 AGM minutes

President's Report

Treasurer's Report

Coordinator's Report

Nominations Committee Report

Guest Presentations:

Morell River Trout Tagging Project by Rosie MacFarlane

An Introduction to the Forest Enhancement Program by Matt Lank

Meeting Adjournment



Minutes - MRMC Annual General Meeting 2022

Date and Location: April 21st, 2022 at Morell Consolidated School

Call to order: 7:00 pm by Will Proctor.

Approval of agenda: Motion to approve the agenda with the edit of no guest speaker due to covid-19.

Motion: Dale Second: Travis

All in favor: Motion carried

President's Report: Will Proctor presented his presidential report. Discussed initiatives and thanked the MRMC board and staff. No questions.

Treasurer's Report: Brian Crane presented his financial report. Reviewed funding and expenses for the 2021 year. No questions.

Coordinator's Report: Hannah Murnaghan presented her annual report. Reviewed staff, projects, training, funders, surveys, monitoring, community outreach, events, social media pages, website, and managing Mooney's Pond Center and trails. No questions.

Board Nominations: Dale conducted the nomination committee report. Nine board members let their names stand including Santina Beaton-MacEachern, Will Proctor, Brian Crane, Dale McIsaac, Jim MacAulay, Steve Collins, Travis James, Doug MacEwen, and Tyrone Paul. Two individuals put their names forward to join the board: Angela Frain and Trent MacSwain. Motion by Dale to accept the 11-member board for the 2022-23 fiscal year. Dale asked three times for any changes to the board of directors.

Motion to approve the board: Travis Second: Brian

All in favor: Motion carried

Motion to adjourn at 7:36 pm: Will Second: Travis

All in favor: Motion carried

President's Report

The Morell River Management Cooperative (MRMC) had a very busy and successful 2022 field season despite the challenges from the aftermath of Hurricane Fiona in September. Watershed Coordinator Hannah Murnaghan and the remaining field staff worked hard to open a few areas of the Morell River and prep for our 2023 season. Unfortunately, redd surveys were unable to be completed, but Hannah, the remaining field crew, and community members: Dan MacAdam, Brent & Jessica Callaghan, and Patrick Curran were able to clean up and repair Mooney's and Peggy's Trail and be one of the first public trail systems re-opened after Hurricane Fiona.

In addition to regular in-stream enhancement activities, MRMC built two wing deflectors along the Morell River and had the drawdown of Mooney's Pond for regular maintenance which included the replacement of the stoplogs in the water control structure and a new fish ladder box in the natural runaround.

Beaver management is important in watershed management, and many thanks to Steve Collins and Doug MacEwen for working with Hannah and MRMC to help when a problem arose.

MRMC hosted many family events in 2022 at Mooney's Pond including the annual Family Fishing Day, Fish Friends Program field trips, and Go!East co-hosted events. Unfortunately, due to a fish kill on the east branch of the Morell River in August 2022 and with warm water temperatures, it was decided to not host the Bowen Collins Memorial Fly-Fishing Derby. We look forward to this biannual event in memory of an avid outdoorsman again in 2023!

Social media presence is increasingly more important to MRMC as it helps keep the community and partners regularly updated. It has been a big benefit to showcase real time temperature data using our remote temperature station that is installed on the Morell River.

We were able to secure funding from many partners due to Hannah's hard work. Thank you to all our 2022 funding partners including PEI Watershed Management Fund, PEI Wildlife Conservation Fund, Abegweit Conservation Society partnership with the Canada Nature Fund for Aquatic Species at Risk, PEI Watershed Alliance partnership with the Habitat Stewardship Program, Atlantic Salmon Conservation Foundation, Island Nature Trust partnership with the Community Nominated Priority Places Program, Skills PEI Post Secondary Program, Jobs for Youth PEI, and Canada Summer Jobs.

Sincere thanks and appreciation to Hannah Murnaghan, on managing all MRMC activities, Mooney's Pond Interpretative Centre, and Peggy's Trail. The MRMC Board would also like to extend our thanks to the 2022 field crew: Shane Collins, Lily Corlett, Shaymus McGuire, Hilary MacCormack, Steven Cockram, Gabriel Murphy, Grant MacCormack, Riley Kelly, Fionn McAdam-Young, High School co-op student James Morrissey, and field dog Laya.

I would like to thank our board members over the past year: Will Proctor, Dale McIsaac, Brian Crane, Travis James, Doug MacEwen, Steve Collins, Tyrone Paul, Angela Frain, Trent MacSwain, and Jim MacAulay.

Respectfully submitted,

Santina Beaton-MacEachern

Treasurer's Report

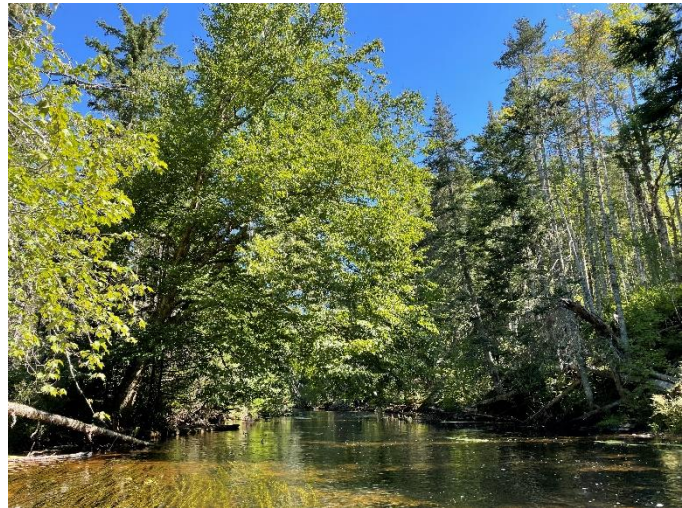
2022 Funding	Amount
PEI Watershed Management Fund	\$104,892.00
PEI Wildlife Conservation Fund	\$8,675.00
Canada Nature Fund for Aquatic Species at Risk Partner with the Abegweit Conservation Society	\$66,071.00
Skills PEI Post-Secondary Program	\$17,472.00
Jobs for Youth Program	\$9,120.00
Canada Summer Jobs Program	\$4,305.00
Habitat Stewardship Program Partner with the PEI Watershed Alliance	\$14,500.00
Community Nominated Priority Places Fund Partner with Island Nature Trust	\$1,500.00
Atlantic Salmon Conservation Foundation	\$22,500.00
Workers Compensation Board Surplus Distribution	\$736.37
North American Bat Monitoring Project Partner with the PEI Watershed Alliance	\$710.00
Donations & Fundraising	\$400.00
TOTAL:	\$250,881.37

Special thanks to the Department of Transportation for their in-kind contribution of materials for the Morell River Deflector Structures Project.

2022 Expenses	Amount
MRMC Employees	\$174,340.96
Bookkeeping & Accounting	\$ 12,748.90
Employee Health Benefits	\$1,415.24
Mileage	\$7,726.10
MRMC Expenses	\$13,003.30
Work Equipment and Materials	\$12,219.78
Trees & Shrubs	\$598.00
Beaver Trapping Services	\$1,950.00
Maritime Electric	\$ 2,600.55
Bell Internet & Phone	\$2,023.94
Insurance	\$1,276.00
Property Tax	\$281.00
Snow Removal	\$240.00
Workers Compensation Board	\$1,074.71
TOTAL:	\$231,498.48

Watershed Coordinator's Annual Report

2022 Field Season
Prepared by Hannah Murnaghan



Introduction

The 2022 field season was very eventful for the Morell River Management Cooperative crew. With six returning crew members and three excellent new additions, it was a very successful season. The crew completed an extensive amount of in-stream and riparian zone restoration work. Once again, the team put in some long strenuous days moving loads of rock for new wing deflectors. I can't thank them enough for their dedication and hard work!

Our partnership with the PEI Watershed Alliance continued with funding from the Habitat Stewardship Program (HSP). The MRMC crew raked 14 Atlantic salmon spawning sites, managed blockages to salmon migration, and monitored water temperature on Bristol Creek as part of the HSP project.

Work on the Morell and Midgell Rivers continued with the Abegweit Conservation Society (ACS) in the final year of the Canada Nature Fund Project: *Etuaptmumk (Two-Eyed Seeing) Stewardship of Freshwater SARs and Ecosystems in the Midgell, Morell, and Mill Rivers of PEI*. Our organizations have been working together on this project to address threats to Atlantic salmon and American eel. Funding from this project has allowed us to complete extensive restoration and monitoring projects over the past four years. We are grateful for this partnership and look forward to continued collaboration with the ACS in future years.

MRMC continues to be stewards of Mooney's Pond Interpretive Centre, Peggy's Trail, and Anderson's Accessible Angling Pool. In August and September, the crew completed maintenance on the dam structure at Mooney's Pond, which included draining the water and replacing the wooden stop-logs.

In September of 2022, Hurricane Fiona hit Prince Edward Island and caused extensive damage within our watershed. With a two-week extension of our in-stream work permit, we were able to clear a few short sections of the Morell River which allowed the Department of Fish and Wildlife and the Abegweit Biodiversity Enhancement Hatchery to complete broodstock collection. The crew also cleared the main trail at Mooney Road for river access. Volunteers and MRMC staff cleared the trail at Mooney's Pond, which was re-opened to the public in October, just before our big Halloween event with Go!East. The accessible boardwalk and fishing platform at Anderson's Accessible Angling Pool remains closed due to the extensive damage it suffered.

Despite the challenges we faced in 2022, it was a successful year, and I am excited about all of the upcoming projects planned for 2023!

- Hannah, MRMC Coordinator

2022 Board of Directors

Santina Beaton-MacEachern, President - Santina is a Conservation Program Specialist with Ducks Unlimited Canada. She has a Wildlife Conservation degree from UPEI and was the coordinator at MRMC from 2015 to 2018. She lives in the Morell watershed and volunteers with MRMC because of her investment in previous MRMC projects and her passion for all things involving the environment, agriculture, and wetlands.

Dale McIsaac, Vice President - Dale is a lifelong fisherman, outdoor enthusiast, and educator. He has a passion for improving the watershed's habitat. Dale was invited to join the board by a long-time member of the group.

Brian Crane, Treasurer - Brian has been on the MRMC board for many years. He lives along Cranes Conservation Zone on the Morell River. Brian joined the MRMC board of directors because of his close connection with the river and its importance to him.

Will Proctor, Secretary - Will has previous stream enhancement experience in the Miltonvale watershed. He has a degree in Agri-biology from NSAC and works for the PEI Department of Agriculture and Land. Will volunteers with MRMC to continue its long history of good river management.

Steve Collins - Steve is very conservation-oriented. He is an avid trapper, hunter, and fisher. He joined the board of directors to represent the trapping community and to see positive changes to the watershed.

Tyrone Paul - Tyrone has been a lifelong land steward, or conservationist, at heart. He grew up hunting, fishing, and trapping with his family in BC before moving to PEI some years ago. Throughout his life and career, he's been involved with natural resources development and protection. He's always been a concerned citizen but has also been involved through professional positions as an active member of different organizations or boards dedicated to nature conservancy or management. Tyrone joined the MRMC board through his involvement as the Director of Natural Resources for the Abegweit First Nation.

Jim MacAulay - Jim represents the area of St. Peter's Bay. He has had an interest in community development all his life. While principal at Morell Regional, he served on various committees in the area. He has an interest in the proper management of the rivers and waterways all throughout the St. Peter's Bay area watersheds.

Doug MacEwen - Doug has had an interest in nature for nearly all his life. He has spent many years fishing, hunting, and trapping. He spent time on the Wildlife Conservation Fund committee, which provided him with extensive exposure to watershed management in the province. During his time outdoors he always took note of the MRMC stream enhancement efforts and their benefits. Doug first joined MRMC for beaver removal services, then was invited to join the board of directors.

Travis James - Travis became a member of MRMC because of his passion for conservation and his deep connection to the area. His background is in the aquatic sciences, primarily estuarine and marine systems. He has work experience in finfish aquaculture and currently works with Parks Canada.

Angela Frain – Angela grew up in the city of Kawartha Lakes with a family that loved to fish and hunt. As an outdoor enthusiast, she enjoys hiking trails and waterways and spending time in nature. She joined the MRMC board of directors to learn more about the area and its watersheds.

Trent MacSwain – Trent has previous watershed experience working with the Winter River Tracadie Bay Watershed in his youth. He has a Holland College diploma in Wildlife Conservation Technology and is a certified Wildlife Technician. Trent grew up hunting and fishing the Morell River. He joined the MRMC board to help preserve the world-class recreational opportunities that the Morell River has to offer.

2022 MRMC Crew

From left to right:

Shane Collins – Watershed Management Fund Student

Lily Corlett – Skills PEI Post Secondary Student

Shaymus McGuire – Skills PEI Post Secondary Student

Hillary MacCormack – Jobs for Youth Student

Steven Cockram – Canada Nature Fund for Aquatic Species at Risk Watershed Technician

Gabriel Murphy – Canada Nature Fund for Aquatic Species at Risk Watershed Technician

Grant MacCormack – Canada Summer Jobs Student

Riley Kelly – Canada Nature Fund for Aquatic Species at Risk Watershed Technician

Fionn McAdam Young – Jobs for Youth Student

Behind the camera: Hannah Murnaghan – Watershed Coordinator



Watershed Management Planning & Training

Proper planning and organization are key to using our resources wisely and maximizing our efforts as a watershed group. Watershed management planning takes place during monthly meetings with the MRMC Board of Directors. We collaborate with our partners for technical expertise to assist us in our watershed restoration work. Our group has a positive relationship with the PEI Forest, Fish & Wildlife division, the PEI Watershed Alliance, the Abegweit Conservation Society, the Department of Fisheries and Oceans Canada, the Atlantic Salmon Federation, and many other environmental organizations.

Several technical documents help guide our work, such as *A Renewed Conservation Strategy for Atlantic Salmon in Prince Edward Island*, and *The Technical Manual for Watershed Management on Prince Edward Island*. Our organization also follows the MRMC Beaver Management Plan and Salmon Management Plan for the Morell River to guide the group's work.

The PEI Watershed Alliance provides online webinars and training sessions for watershed groups. Our partnership with the Abegweit Conservation Society has also allowed MRMC staff to participate in training opportunities throughout the CNFASAR project. We attend various workshops, seminars, and training days to build our capacity as a watershed group.



2022 Field Season Projects

Morell River Deflector Structures

“Wing deflectors are structures that extend out from the stream bank into the stream channel. Their intended function is to focus the water flow towards the center channel and thereby narrow, deepen and/or create sinuosity in the channel. They also diversify the stream reach by concentrating the flow and scouring pools. The scouring action maintains clean substrates, which can attract aquatic insects and spawning fish. The resulting pools provide cover and resting areas for fish.” – Technical Manual for Stream Enhancement on Prince Edward Island

To create pools for Atlantic salmon and brook trout, the MRMC crew built two new wing deflector structures on the Morell River in 2022. The first deflector was built on the main branch at the bottom of Mooney Road. After a site visit with the Provincial Freshwater Fisheries Biologist, the second deflector site was selected along the west branch at ‘Art’s Hole.’ The MRMC crew also finished filling in deflector structures with rock built in 2021 along the main branch of the Morell River. We would like to give special thanks to the Department of Transportation for providing materials for the structures and to Charlie Ralph for his assistance and guidance in the project.



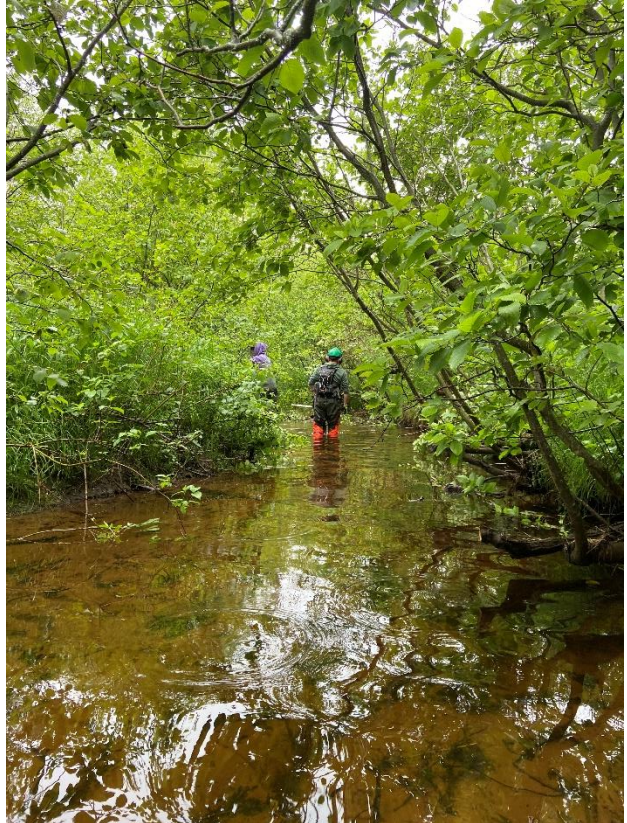
Morell River Brush Mats

Building brush mats in headwater streams is an effective and cost-efficient way to improve the in-stream habitat for salmonids. Brush mats collect excess sediment during high water events to narrow and deepen the channel. By removing excess sediment, gravel and cobble substrate are uncovered on the stream bed to create suitable spawning areas and juvenile habitat for salmonids. In 2022 the MRMC crew built 24 brush mats on the south branch of the Morell River. We plan to revisit this branch of the Morell River annually to monitor the function of the brush mats and build more where needed.



Bristol Creek Atlantic Salmon Habitat Enhancement

The most productive Atlantic salmon spawning grounds found in Bristol Creek are located between Kenovan Road and the top of St. Peter's Lake. The MRMC crew focused on improving the Atlantic salmon habitat in this area by removing a significant blockage at the inlet of St. Peter's Lake and enhancing spawning sites. The MRMC crew raked embedded substrate and added cobble from the riverbed at 14 suitable spawning sites. Stream maintenance was completed on 4.5km of Bristol Creek which included trimming back overgrown alders and removing three inactive beaver dams.



Riparian Zone Restoration

When it comes to riparian zone restoration, Morell River Management Cooperative's goal is to create healthy, diverse, and resilient riparian areas. By planting a variety of native trees and shrubs, the riparian zone becomes more diverse and resilient to the impacts of climate change. In 2022, seven riparian areas were selected for planting; five along the Morell River, one along the St. Peter's River, and one along Bristol Creek. Two additional planting sites planned for Bristol and Morell could not be completed due to Hurricane Fiona.

Most sites selected were comprised of white spruce nearing the end of its lifespan or areas with limited species diversity. The MRMC crew planted yellow birch, sugar maple, red oak, eastern hemlock, red spruce, white pine, mountain ash, and eastern white cedar to create diversity within the stands.

A total of 982 trees were planted along the Morell River, 380 along St. Peter's River, and 50 along Bristol Creek. Once mature, these trees will provide shade and create habitat for wildlife.



Barrier Management

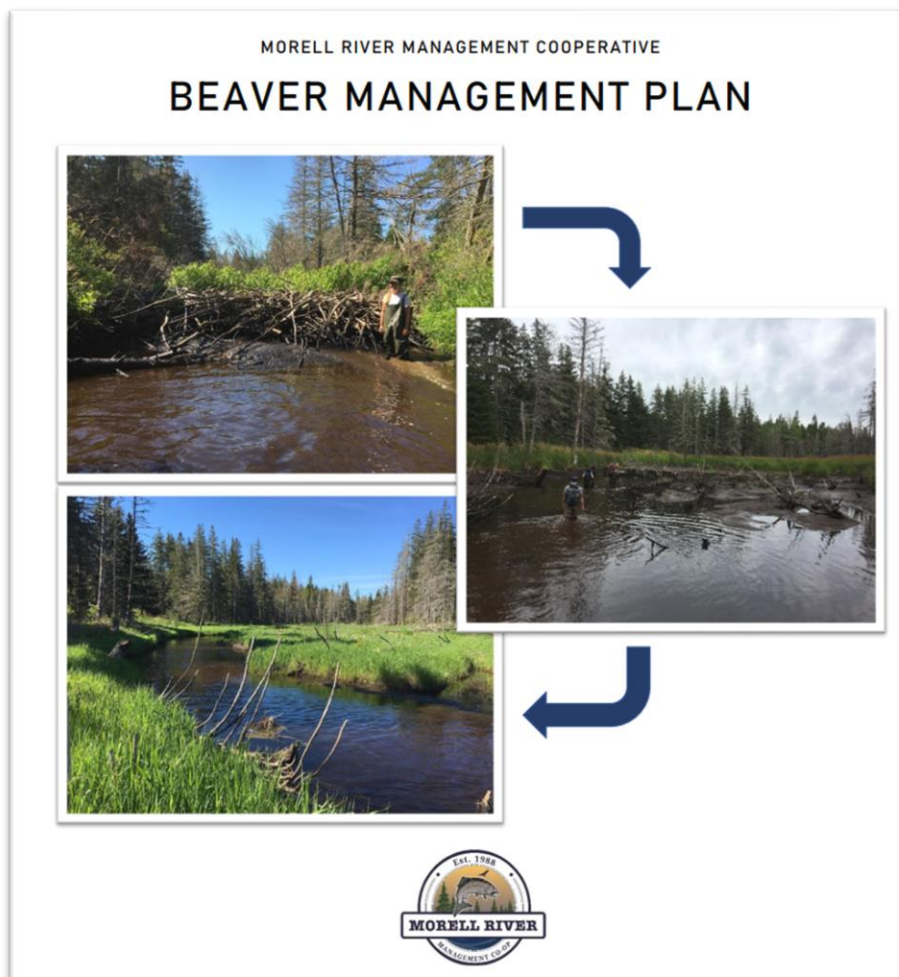
Morell River Management Cooperative manages barriers to fish migration on an annual basis. Blockages are managed because they can impede fish passage and create stagnant water. Windfalls on the Morell River are selectively cut to create fish passage, sufficient flow, and a paddle route for canoes while still leaving adequate cover for fish habitat. Roughly one-third of a blockage is opened in the main thalweg of the river, and the rest is left as in-stream woody debris. Where possible, the main trunk of a windfall spanning the river is left as a wildlife crossing for small mammals. Barrier removal was completed on the Morell River, Bristol Creek, Marie River, and St. Peter's River in 2022.



Beaver Management

Morell River Management Cooperative actively monitors beaver activity within our management areas to ensure that migratory fish species can migrate successfully between saltwater and freshwater habitats. The MRMC crew surveys migration routes in the spring and fall to ensure that beaver dams do not impede the migration of Atlantic salmon, Rainbow smelt, gaspereau, brook trout, and American eel.

MRMC also manages beaver activity to prevent the loss of riparian tree cover. Beaver dams can flood large areas, and if left for too long, submerged trees will die. The Morell River is a warm water system and shade provided by riparian trees is important. MRMC works with local trappers to manage beaver activity and follows the MRMC Beaver Management Plan to identify priority areas. In 2022 MRMC managed six beaver dam sites on the Morell River and removed three inactive beaver dams on Bristol Creek.



Access Trails

Access trails provide safe and efficient access to project sites for MRMC staff. Aside from providing safety for the crew, trails also prevent accidentally stepping on redds in the fall and juvenile salmon during the spring when fry are emerging.

Maintenance on access trails was completed in the spring of 2022. All trails were accessible for the majority of the field season until Hurricane Fiona struck. The storm created a mess of our trail system. After the hurricane, the MRMC crew managed to clear a few access trails, including the main trail at Mooney Road that gives access to the main branch of the Morell River. It will take a lot of work to get all of our access trails opened again.

Our trail systems are essential for the crew to complete stream enhancement and monitoring activities. We appreciate the property owners that allow us to use their land to create access trails.



Shoreline Cleanup

For the past nine years, Morell River Management Cooperative has completed an annual cleanup along the beautiful shorelines of St. Peter's Bay. With some of the most picturesque views on the Island, the shorelines of St. Peter's Bay are loved by residents and visitors alike. MRMC takes pride in keeping the shorelines free of garbage to not only maintain the bay's natural beauty but also to protect the home of PEI's native wildlife and species at risk. This important shoreline habitat is used by native species like piping plovers, bank swallows, and other migratory shorebirds.

In 2022 MRMC collected about 1000 pounds of garbage and marine debris, including Styrofoam buoys, rope, and various pieces of fishing gear. PEI Mussel King was a great help by picking up the piles of garbage from the shoreline by boat; this prevented us from using vehicles on the sensitive shorelines. MRMC takes pride in keeping the St. Peter's Bay shoreline pristine and works to continuously educate the local communities about the importance of keeping the environment clean for both people and wildlife.



North American Bat Monitoring Program

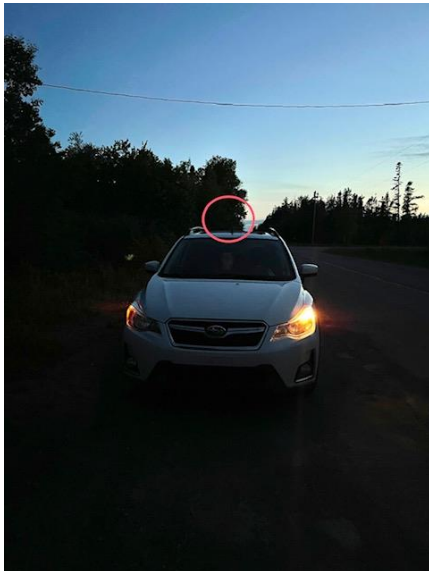
As part of the PEI Watershed Alliance bat monitoring project, MRMC installed stationary acoustic monitors at four sites and completed one mobile transect within the Morell watershed in 2022.

Invasive Species Management

In 2022 the MRMC crew partnered with the PEI Watershed Alliance Invasive Species Action Team to tackle two Japanese knotweed sites in our management area. The first site along Lewis Pond in the Schooner Creek Watershed was successfully cut and tarped and will be monitored closely. The second site in St. Peter's Bay was started, but after new knotweed stands were discovered, the area was too large for our crews to compete. 'Clean, Drain, Dry' signs were also installed at river access points throughout the MRMC watersheds to prevent the spread of aquatic invasive species.

Canada Goose Banding

The MRMC crew was excited to help Ducks Unlimited Canada, the Canadian Wildlife Service and Eastern Habitat Joint Venture with goose banding at Avondale Golf Course in 2022.



Wood Duck Boxes

Thanks to a donation from Delta Waterfowl, 12 wood duck nesting boxes are being installed throughout the Morell Watershed in memory of Bowen Collins. Bowen was an avid hunter, trapper, and angler and loved the outdoors.

Mooney's Pond Pollinator Garden

Over the past few years, we have established a healthy swamp milkweed garden at Mooney's Pond to create a food source for pollinators. The garden has attracted some exciting insect species, including the endangered monarch butterfly. Swamp milkweed is essential for the caterpillar life stage of the monarch.

Fish Stocking

MRMC staff assisted the Department of Forests, Fish and Wildlife, and the Abegweit Biodiversity Enhancement Hatchery with releasing Atlantic salmon and brook trout on the Morell River and Bristol Creek. 60,000 Atlantic salmon were released in the Morell River in 2022 as part of the PEI Fish Stock Enhancement Program.



Surveys & Monitoring

Temperature Monitoring

To monitor temperatures within the MRMC watersheds, we install Hobo™ temperature loggers on each river and run a remote satellite temperature station to collect real-time data on the Morell River.

The remote temperature station is near ‘the forks,’ where the east and west branches merge into the main branch. When temperatures exceed 20°C, brook trout and Atlantic salmon become stressed and seek cold water refuge. Angling during these temperatures causes additional stress to the fish. Data from the temperature station is posted on the MRMC Facebook page every week during the summer months so that anglers can make informed decisions based on water temperature.

The Hobo™ data loggers were placed in ten locations throughout the Morell River and three locations on each of the other watersheds managed by MRMC. The loggers were deployed in May and were retrieved in November 2022.



Pit Tagging & Antenna Stations

The MRMC crew installed the fish trap at Leard's Pond on October 5th, 2022 and operated the trap for 48 days. Fish moving through the trap were scanned for pit tags with a portable reader. With the assistance of the Abegweit Conservation Society, 17 Atlantic salmon from the Morell River were implanted with new pit tags in 2022. Three pit tag reader stations located on the main branch, east branch, and west branch are operating to collect fish movement data.

Smolt Tagging

MRMC was excited to collaborate again with the Mi'kmaq Confederacy of PEI and the Abegweit Conservation Society on a new Atlantic salmon tracking project funded by the Environmental Sciences Research Fund. The project involves tagging and tracking Atlantic salmon smolts and kelts across eastern Canada to learn more about their migration. MRMC assisted with this project by running a fyke net on the main branch of the Morell River to catch smolts. The information collected from this tagging project will reveal the migration movements of Atlantic salmon, which will assist with future management plans for many ocean resources. Partners in the project include Fisheries and Oceans Canada, the Ocean Tracking Network, the Atlantic Salmon Federation, Indigenous organizations, and many other environmental groups.



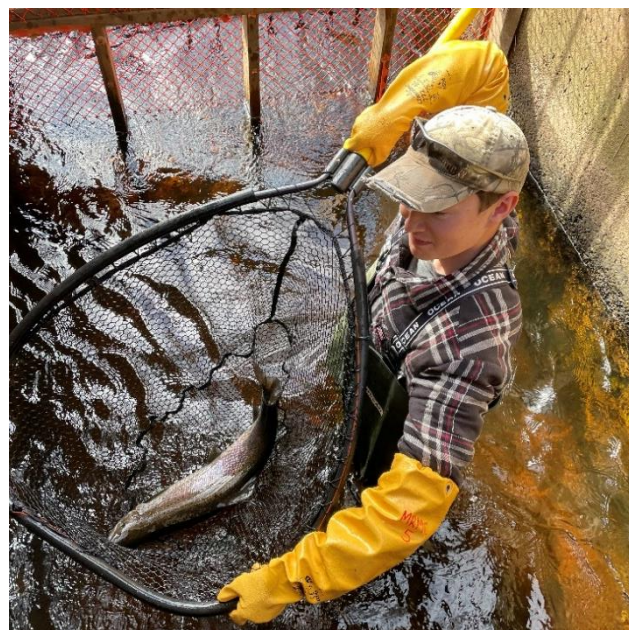
Redd Surveys

When conditions allow, MRMC completes extensive redd surveys on the Morell River, St. Peter's River, and Bristol Creek. Surveys are completed by walking or paddling and marking redds with GPS points. Unfortunately, after the devastation caused by Hurricane Fiona, the Morell River was impassible, and many sections were inaccessible due to the vast number of windfalls across access roads, trails, and the river itself. In addition to windfalls, heavy rain events caused high flows, which also limited redd survey efforts. The MRMC crew was able to get surveys done on a very small portion of the river. The redd survey was considered very incomplete with 28 redds counted. On a positive note, the MRMC crew did identify Atlantic salmon redds far up the east and west branches, meaning that the impacts of Hurricane Fiona did not restrict the salmon migration routes on the Morell River in 2022.



Fish Trap & Broodstock Collection

Morell River Management Cooperative is responsible for maintaining and monitoring Leard's Pond's fish trap on the Morell River. The trap is used to collect brook trout and Atlantic salmon broodstock for the PEI Fish Stocking Program. Broodstock were also collected by electrofishing with the Department of Forests, Fish and Wildlife. The eggs provided by the fish are hatched at the Abegweit Biodiversity Enhancement Hatchery. Trout and salmon fry are released back into the wild the following year.



Community Connection

Go!East Events

The Eastern Region Sport and Recreation Council (Go!East PEI) and MRMC have been co-hosting events at Mooney's Pond for nearly 10 years. These events encourage people to get outside and get active by incorporating a hike around Peggy's Trail with every event. We were able to host several events in 2022 including a Hike & Bonfire event and The Great Pumpkin Walk. Attendance for these events varied from 25 to 200 participants.

We look forward to hosting more events with Go!East this season.



Plamu'k na Kitapina'q - Salmon Are Our Friends Program

We were very excited to have students visit Mooney's Pond once again for the Salmon Are Our Friends Program fish releases. Members from Abegweit First Nations and the Abegweit Conservation Society performed smudge ceremonies and Honour Songs for the salmon before they were released into the Morell River by the students. The students also enjoyed doing a scavenger hunt around Peggy's Trail, looking at the MRMC taxidermy, and barbequed hotdogs for lunch!



Outreach

Every year MRMC takes part in several outreach events varying from presentations to educational field trips. These events involve groups from elementary schools, high schools, post-secondary institutes, and the community. Our educational outreach experiences can range from a full day of tree identification and planting to a one-hour guided nature walk around Mooney's Pond. In addition to educational activities, MRMC partners with other businesses and community groups to facilitate training and other activities. Listed below are some of the outreach activities held in 2022:

- Atlantic Salmon Conservation Foundation Wild Atlantic Salmon Symposium – Presentation on Morell River Atlantic salmon projects
- Eastern Region Sport and Recreation Council - Go!Nature Camp at Mooney's Pond
- Family Fishing Day at Mooney's Pond
- Holland College Wildlife Conservation Technology class - Fish trap and broodstock collection demonstration field day
- PEI Department of Justice and Public Safety – Ice rescue training at Mooney's Pond
- PEI Public Library Service – Summer Story Walk at Mooney's Pond
- PEI Watershed Alliance - Watershed worker training field component in Morell
- Red Giant Productions - “Time of Learning” production and filming on Morell River
- River Healing Conference – Presentation on MRMC's CNFASAR projects
- Water Innovation Lab Atlantic 2022 - Field day at Mooney's Pond

Communications

The MRMC social media pages allow for connection and engagement between community members and our organization. The MRMC social media pages highlight our watershed enhancement efforts and are used to inform community members about our public events. These channels are updated regularly.

The MRMC website provides information about our organization, our funding partners, our projects, and links to additional environmental resources. PDF versions of MRMC's Annual Reports can be found on the website.



Facebook @morellrivermanagementcoop – 1,747 followers



Instagram @morellrivermanagement – 699 followers



Website www.morellriverpei.com

Mooney's Pond Interpretive Centre & Trail

MRMC continues to operate and maintain Mooney's Pond Interpretive Centre, Peggy's Trail, and Anderson's Accessible Angling Pool. Routine maintenance is completed on the trails, wheelchair-accessible boardwalks, and fishing platforms. A new railing was installed on the public washroom accessible ramp and a new grip mat was installed on Anderson's boardwalk.

The trails and boardwalks suffered extensive damage from Hurricane Fiona. The main loop trail at Mooney's Pond was cleared and opened by the end of October with minimal damage to the wooden bridges. The accessible boardwalk and fishing platform at Anderson's Pool were damaged beyond repair. The replacement of the boardwalk and accessible fishing platform is planned for the upcoming work season.

In 2022 maintenance work was completed on the dam structure at Mooney's Pond. The wooden stop logs in the structure were removed and replaced. The metal grates were cleaned and the frame was painted. The pool below the pond was excavated to remove excess silt. While the pond was drained for maintenance, a new wooden fish ladder box was installed in the nature-like runaround.



Partners

Without the support of our partners and funding programs, we simply could not complete our conservation, monitoring, and enhancement work.

- Abegweit Conservation Society
- Atlantic Salmon Conservation Foundation
- Atlantic Salmon Federation
- Canada Nature Fund for Aquatic Species at Risk
- Canada Summer Jobs Program
- Community Nominated Priority Places Fund
- Department of Fisheries and Oceans Canada
- Ducks Unlimited Canada
- Eastern Region Sport and Recreation Council
- Habitat Stewardship Program
- Island Nature Trust
- Jobs for Youth Program
- Mi'kmaq Confederacy of PEI
- Mussel King PEI
- PEI Department of Forests, Fish and Wildlife
- PEI Department of Transportation
- PEI Post Secondary Program
- PEI Watershed Alliance
- PEI Watershed Management Fund
- PEI Wildlife Conservation Fund
- Skills PEI Post Secondary Program

Special thanks to Brent & Jessica Callaghan and Dan MacAdam for helping clean up Mooney's Pond after Hurricane Fiona, Patrick Curran for repairing our office roof, and Charlie Ralph for assisting the crew in building the Morell deflectors. Finally, to all the individuals that support our efforts, including community members, anglers, landowners, fellow conservationists, and friends, thank you!

2023 Work Plan

Projects

- Hurricane Fiona assessment and clean up
- Remove barriers to fish migration and open Morell canoe route
- Finish filling in Art's Hole wing deflector with rock
- Remove blockages on cold water tributaries on the east branch of Morell River
- Beaver Management in all watersheds
- Installation of wood duck boxes in memory of Bowen Collins
- Annual Shoreline Cleanup
- Address sediment issues and eroded gully at Indian Bridge (Department of Transportation)
- Continue working with landowners to address sediment issues on Morell River
- Install new crossing at Gill Road Extension to keep ATVs out of the stream
- Reconstruction of Anderson's Accessible Fishing Platform and Boardwalk
- Upgrades to Mooney's Pond Interpretive Centre
- Assessment of MacKinnon's Pond in Bristol Creek
- Assessment of Mooney's Pond for semi-natural rearing (temperature and dissolve oxygen loggers to be installed)

Surveys and Monitoring

- Temperature data loggers & remote satellite monitoring station on Morell River
- East branch temperature and dissolved oxygen monitoring
- Redd surveys
- Smolt & Kelt tagging with MC PEI and the ACS
- Morell River trout tagging project and creel surveys with Forests, Fish and Wildlife
- Electrofishing index sites
- Sediment monitoring
- Fish trap count and broodstock collection
- Pit tagging Atlantic salmon with the ACS

Community Outreach and Events

- Events with Eastern Region Sport and Recreation Council
- Family Fishing Day at Mooney's Pond
- Salmon are our Friends Days at Mooney's Pond
- Bowen Collins Memorial Fly-Fishing Derby
- Morell River Run Festival Expo & Parade
- Maintaining the website and social media pages
- Education & community outreach activities

Contact Information

Hannah Murnaghan, Watershed Coordinator

Cell phone: 902-583-3144

Email: coordinator@morellriverpei.com

Santina Beaton-MacEachern, President, Board of Directors

Email: president@morellriverpei.com

Office Address:

Morell River Management Cooperative

2720 Mount Stewart Road, Route 22

Peakes, PE, C0A1T0

